

SCIENCE PROVES The Biblical Account



“..You have covered me in my mother’s womb.
I will praise Yahweh; for I am fearfully and
wonderfully made: marvellous are Your works”
Psalms 139:13b-14

YOU ARE YAHWEH’S INTELLIGENT DESIGN!

Born in 1452, Leonardo da Vinci was the embodiment of the "Renaissance man", a man who had attained mastery over all branches of art and science. He was a painter, sculptor, architect and engineer besides being a scholar in the natural sciences, medicine and philosophy. He found intelligent design in all of creation - including your complex human body and mind. Intrigued by the amount of simple and complex geometry found in the design of the human body, da Vinci was convinced that mankind must have a special purpose. With such intelligent design found throughout the entire universe, you can be sure this same Designer has a special purpose for YOU! This purpose and intelligent design cannot be revealed by this world’s secular education system based on Charles Darwin’s unsubstantiated theory of evolution. Your life has meaning! You are not a biological accident nor the descendant of apes. Only Satan would orchestrate such a lie. Know this: the Creator Yahweh loves you beyond your wildest dreams! However, Satan the god of this present age considers you the enemy because Yahweh offers you ETERNAL LIFE! Now science has uncovered archeological EVIDENCE of His love & miracles!



**The Psalmist
asked what all
men have asked,**

“When I consider Your heavens, the work of
Your fingers, the moon and the stars, which You
have ordained. What is man that You are mindful
of him, and the son of man that You visit Him?”
- Psalm 8:3-4

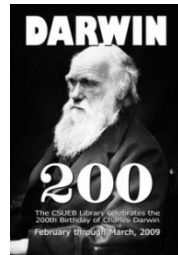
An impressive scientific challenge to Darwinism was capsulated in a **Christianity Today** article as follows: During the fall of 1996, a series of cultural earthquakes shook the secular world with the publication of a revolutionary new book,



Michael Behe’s **DARWIN’S BLACK BOX: THE BIOCHEMICAL CHALLENGE TO EVOLUTION.**

Newspapers and magazines from Vancouver to London, including Newsweek, The Wall Street Journal, and several of the world’s leading scientific journals, re-ported “tremors” in the world of evolutionary biology. The Chronicle of Higher Education, a weekly newspaper read primarily by university professors and administrators, did a feature story on this author two months after his book appeared. The eye catching headline read, **“A Biochemist Urges Darwinists to Acknowledge the Role Played by an Intelligent Designer.”** With his book realizing multiple printings, Behe is popular on the university-speaking circuit.

In a typical lecture, Behe projects on a screen his favorite quote by Darwin from **THE ORIGIN OF SPECIES:**
“If it could be demonstrated that any complex organ existed which could not possibly have been formed by numerous, successive, slight modifications, my theory would absolutely break down.”
Behe takes on Darwin’s



challenge by asking, “What type of biological system could not be formed by ‘numerous, successive, slight modifications’? Well, for starters, a system that has a quality that I call **irreducible complexity.**” Next, Behe flashes on the screen his hallmark illustration of “irreducible complexity”—a MOUSETRAP! After observing that all five parts of the trap are simultaneously essential for performance, Behe adds: You need ALL the parts to catch mice. You can’t catch a mouse with just 1. a Platform, then add 2. the Spring and 3. the Catch, then add 4. the Hammer and then 5. the Bait!
ALL the parts must be there to have any function at all!



The mousetrap is irreducibly complex. Next, Behe explores the ultra-complex world of molecular machinery and cellular systems. To Darwin, the cell was a “black box”—its inner workings were *utterly mysterious* to him. Now, the black box has been opened up and we know how it works. Applying Darwin’s test to that ultra-complex world of molecular machinery and cellular systems that have been discovered over the past 40 years, we can say that Darwin’s theory has “absolutely broken down.” With that observation of cell complexity, Darwin is caught in Behe’s mousetrap!

A partially evolved cell cannot wait millions of years to become complete because it would be highly unstable and quickly disintegrate in the open environment, especially without the protection of a complete and fully functioning cell membrane. Of course, once there is a complete and living cell then the genetic program and highly complex biological mechanisms exist to direct the formation of more cells. The cell’s genetic code and biological machinery will use and direct the raw materials, entering the cell from the environment, into forming more cells. The question for evolutionists and naturalists is **how did the cell or life come about when there was no directing mechanism in Nature – according to the evolutionary model?**

Behe presses his point further: As you search the professional literature of the last several decades looking for articles that have been published even attempting to explain the possible Darwinian step-by-step origin of any of the

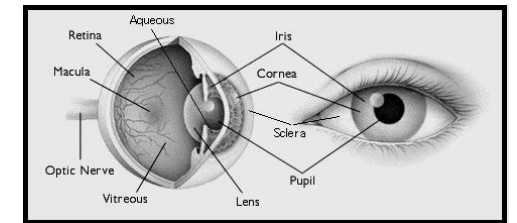
systems, you will encounter a thundering **SILENCE.** Absolutely no one—not one scientist—has published any detailed proposal or explanation of the possible evolution of any such complex biochemical systems. And when a science does not publish, it becomes a ‘superstition’ and ought to perish from gov’t’s education systems. The “intelligent design” behind such marvelous “irreducibly complex systems” in nature is, of course, the Creator who revealed himself to man as “Yahweh” (Ps.135:13).



“the probability of the sequence of molecules in the simplest cell coming into existence by chance is equivalent to a tornado going through a junk yard of airplane parts and assembling a 747 Jumbo Jet!”

-The great British scientist Sir Frederick Hoyle

How infinitely more complex the human cell, the eye or the brain—than a mouse-trap! How wonderfully and poetically the Psalmist expressed his appreciation of an Intelligent Creator who **ENGINEERED** the most beautiful of systems – **YOUR MIRACULOUS HUMAN BODY AND MIND:**



Chance did NOT create the complexity of the focusing mechanisms within the eye.

“Thou it was who didst fashion my inward parts; thou didst knit me together in my mother’s womb, I will praise thee...my body is no mystery to thee, how I was secretly kneaded into shape and patterned in the depths of the earth. Thou didst see my limbs unformed in the womb. . . day by day they were fashioned, not one of them was late in growing. How deep I find thy thoughts, O Yahweh, how inexhaustible their themes!” –Psalms 139

SCIENCE PROVES THE ARK OF NOAH & YAHWEH'S LOVE TOWARDS THE RIGHTEOUS

"and the Ark rested in the mountains of Araratu"
Genesis 8:4



Thousands of Metal Rivets

Noah's Ark National Park – Uzengeli Village, Turkey

In 1984 after an unusual earthquake, Ron Wyatt and Former Apollo astronaut Col. Jim Irwin traveled to the site in eastern Turkey to do more extensive metal detector scans. The earthquake proved to be a blessing that caused the ark to be exposed an additional 20 vertical feet.

The ark was measured and its internal structure was thoroughly mapped out with metal detectors and ground penetrating radar. The patterns clearly showed the ribs of the ark, an ~10 foot wide door near the front, two large water tanks near the front door, and large stabilizers running the length of the ship. The length of the ship was measured independently by two teams and found to be 515 feet long. Since Moses who wrote the book of Genesis was familiar with the Egyptian cubit which is 20.6 inches, the biblical record of 300 cubits is exactly correct! 300 cubits x 20.6 /12 = 515 feet!

Ron Wyatt found many samples of aluminum rivets and metal plates. In fact, there was so much metal in the entire area that metal detection surveys were able to reveal the layout of the entire superstructure as pictured above. There seems to be no doubt that a huge wooden vessel of some kind has been preserved in the lower

mountains of Ararat. This is further confirmation that the Biblical claims of a global flood are not mere myth. This may not fit into modern day acceptable thought and progressive evolutionary models, but archeological evidence cannot be denied. It is not mere speculation any longer that there was once a great global flood!

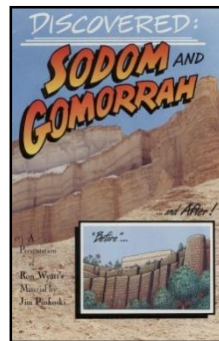


Ron finds large anchors, identical in design to smaller drogue anchor stones in-line with the ancient ark structure. Drogue anchors were designed to drag in the water, stabilize an Ark and keep it perpendicular to any oncoming waves; not to prevent it from moving.



"Ron had a specimen of wood - the "deck timber" - cross sectioned to reveal Noah's knowledge of making strong plywood."
-WyattMuseum.com

SCIENCE PROVES SODOM'S FIRE & YHWH'S LOVE TOWARDS THE RIGHTEOUS



Dead Sea, which show clear signs of having once

The five cities of the plain have been located along the western edge of the Dead Sea and the archeological evidence is staggering. Lot and his family were spared from the destruction which still stands for all to see today! Round balls of brimstone of nearly pure sulfur have been found embedded in an ashen area near the

been ancient city structures! Everything in these cities burned and turned into white ash, including the city buildings themselves as Scripture says. Genesis told us that YHWH rained down "fire and brimstone". When YHWH rains down fire, it is a consuming fire, just like the time of Elijah when YHWH sent down fire to destroy the stone altar, the limestone buildings here were totally destroyed and turned into ash. The cities of the plain were destroyed as a **WARNING** for all that this same event will happen again one day to the wicked. YHWH was fully capable of preserving this ancient lesson for us to see and hopefully learn from – true repentance!

"Turning the cities of Sodom and Gomorrah into ashes, condemned them to destruction, making them an example to those who afterward would live unrighteously" II Kepha/Peter 2:6



Notice the burn rings that remain around the large pellets of brimstone from heaven which embed the ENTIRE landscapes of these five cities. Yet the righteous were delivered just as YHWH promised!



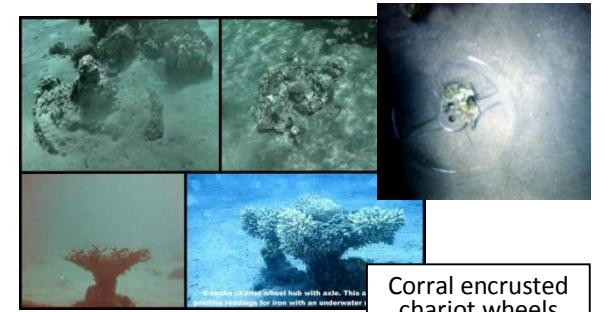
SCIENCE PROVES THE GREAT EXODUS & YHWH'S LOVE TOWARDS THE RIGHTEOUS



"and YHWH overthrew the Egyptians in the midst of the sea. And the waters returned, and covered the chariots and the horsemen"
Exodus 14:27b-28a

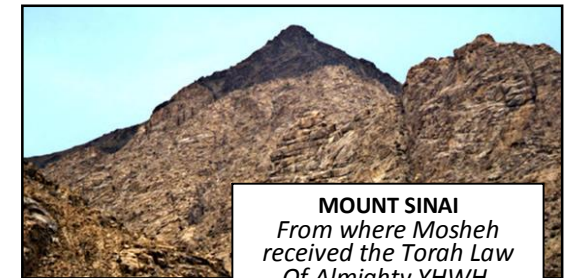
Everyone has heard the account of Moses parting the Red Sea to save the Israelite nation from the menacing Egyptians who threatened to kill them. Now, thru Ron Wyatt's discovery, science has now confirmed this miraculous legend with the find of horse skeletons and numerous chariot

wheels at the bottom of the Sea of Aqaba just west of Saudi Arabia near Mt.Sinai, including this fantastic shot of a **GOLD-plated** chariot wheel...



Corral encrusted chariot wheels

Mt. SINAI'S CHARRED PEAK YHWH'S LOVE REVEALED TO ALL MANKIND



MOUNT SINAI
From where Mosheh received the Torah Law Of Almighty YHWH.

"Mt.Sinai was altogether on a smoke, because Yahweh descended upon it in fire: and the smoke thereof ascended as the smoke of a furnace, and the whole mount quaked greatly." Exodus 19:18

The fiery power of heaven came down upon Mt. Sinai in Saudi Arabia – blackening it's peak for all to see. Science cannot debunk the evidence.....
IT ONLY CONFIRMS IT!!!

The archeological record reveals that the miraculous stories found in the Word of YHWH have always been true. Almighty Yahweh proved His everlasting love and mercy which no one can deny now. This 'intelligent design' includes His Son Yahsha h'Meshiakh's majestic return to establish true paradise on earth – the Kingdom of Yahweh! Let Yahweh SAVE YOU too!.....

Contact the Remnant of YHWH today!
"only a remnant will be saved" Romans 9:27



TwoWitnessMinistries.com
 c/o PO Box 2453 (non-domestic)
 Abilene, Texas [79604]tdc